

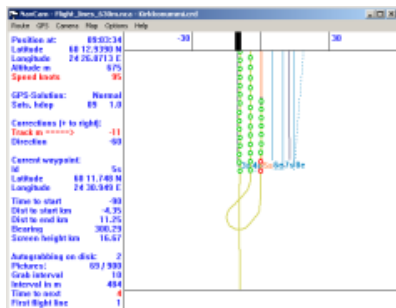
EnsoMOSAIC flight control system



MosaicMill offers camera control electronics + flight software for high-end mapping:

EnsoMOSAIC flight control electronics is the most precise camera control system in its price segment. System applies PPS signal from GPS for camera triggering, which guarantees perfect coordinate – image matching.

EnsoMOSAIC flight control electronics is available in three different versions according to integration level. System can be upgraded into highest positional accuracy (0.05 m, without GCP) level by selecting a relevant GNSS device and IMU.



A. Complete stand alone system connected into aircraft power supply

- Includes GNSS, trigger and synchronization, power supply, NavCam
- Power: input 12 V or 24 V aircraft power
- Durable case, dimensions 17 cm * 36 cm * 47 cm , 8 kg

B. Complete stand alone system with internal power supply

- Includes GNSS, trigger and synchronization, NavCam software
- Power: equipped with internal batteries
- Durable case, dimensions 14 cm * 29 cm * 34 cm, 6 kg

C. Core components without power supply

- Includes trigger and synchronization and NavCam software
- No GNSS receiver; a device with PPS signal required
- No power source; 12 V input required
- Dimensions 11 cm * 7cm * 3 cm, 0.5 kg

The hardware is connected with NavCam software for aircraft navigation and camera control. As input the system requires flight lines as way points in text format. Outputs of the EnsoMOSAIC flight control system are images synchronized with the coordinates, which are 100 % compatible with any image rectification and mosaicking software. For smooth image processing EnsoMOSAIC software is recommended.

MOSAICMILL

MosaicMill Oy
Kultarikontie 1, 01300 Vantaa, Finland
www.mosaicmill.com, sales@mosaicmill.com